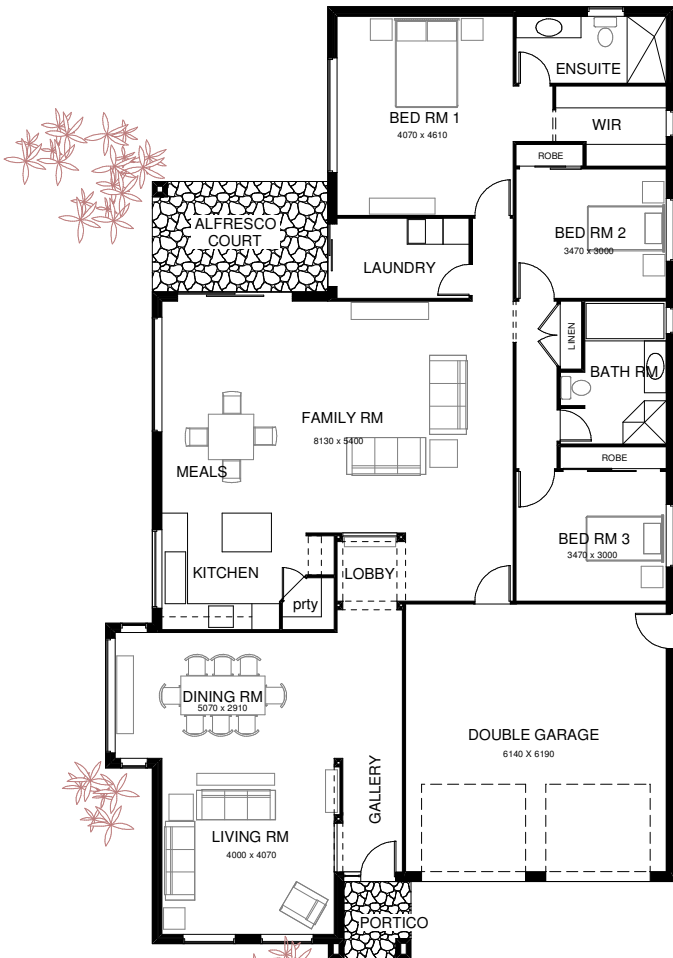




traditional streetscape



modern streetscape



the floor plan

Floor Area	188.40 square metres
Garage Floor Area	40.20 square metres
Alfresco Dining	10.40 square metres
Portico	2.80 square metres
Total Area	241.80 square metres or 26 Squares

the oakwood 242

From the moment you step inside the entrance gallery & foyer there is a feeling of space and function.

The Oakwood 242 offers generous open plan formal & informal living areas, a huge master bedroom suite with its own ensuite and large walk-in-robe & 2 large secondary bedrooms each with robes centered around a large family bathroom.

The Oakwood 242 also features a wonderful alfresco covered court that flows on from the family living room, & there is a large double garage with internal access.

The Oakwood 242 is a visually pleasing home with a choice of two facades, the traditional streetscape or modern streetscape. Both facades feature a blend of materials such as brick, weatherboards & varying roof materials & form that result in a visually striking home.



bradley curtis

managing director
 T: 1800 468 741
 F: 02 9383 8438
 P: PO Box 56 Hill Top NSW 2575
 E: sydneydesign@bigpond.com.au
 W: www.sydneydesigncompany.com.au

the **sydney design** company
 building designers