



the **sydney design company**
building designers

the newport 15

The Newport 15 features flowing open planned living areas with stunning two storey high ceilings to the living room and meals.

design features

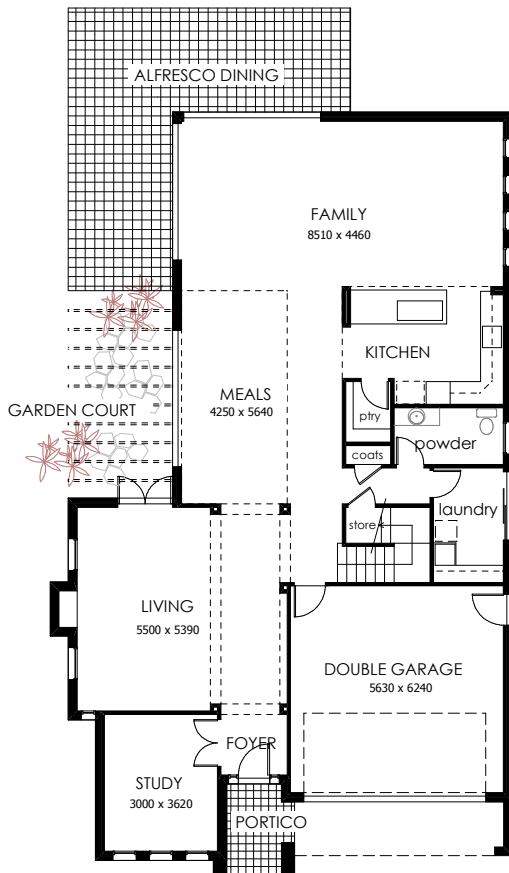
- formal and informal living areas
- home office or media room
- contemporary kitchen design with walk in pantry
- alfresco dining court
- first floor gallery above the living & meals
- master bedroom suite with ensuite and dressing room
- 3 secondary double bedrooms all with robes
- family bathroom and separate toilet
- guest powder room to the ground floor
- double garage with internal access



traditional facade

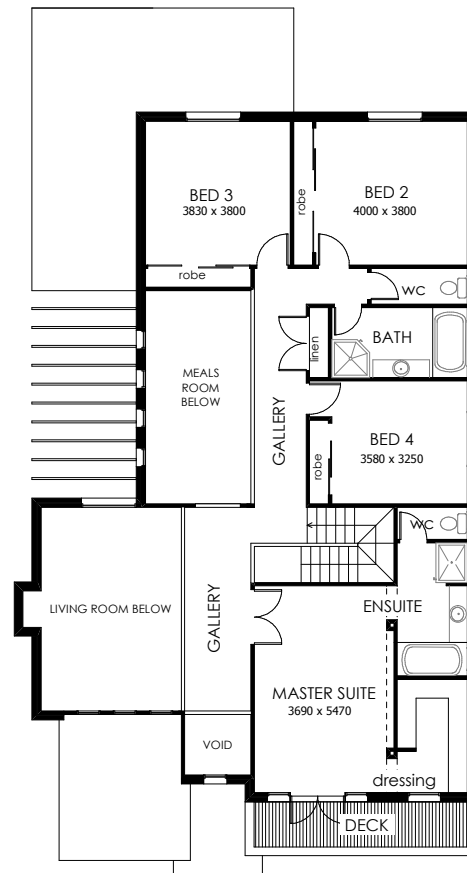


modern facade



the ground floor plan

Copyright
The Sydney Design Company Pty Limited
ABN 81 054 771 578
T: 1800 468 741
F: 02 9383 8438
E: sydneydesign@bigpond.com.au
W: www.sydneydesigncompany.com.au



the first floor plan

Ground Floor Area	154.90 square metres
First Floor Area	176.20 square metres
Garage Floor Area	35.00 square metres
Balcony, Patio's etc	61.80 square metres
Total Area	427.90 square metres or 46 Squares

